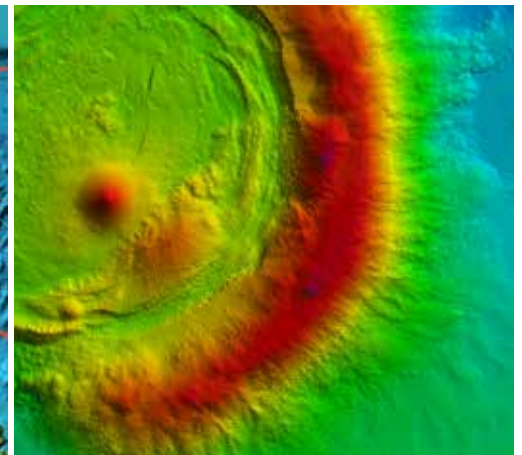
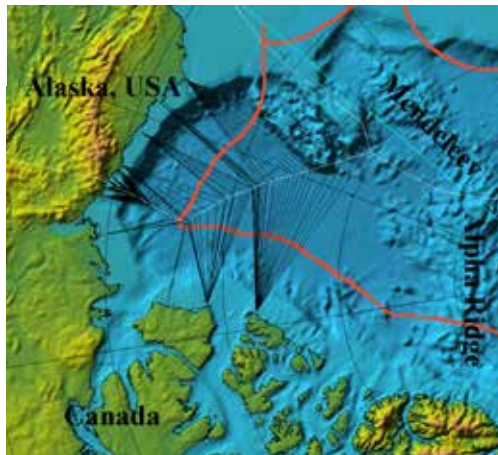
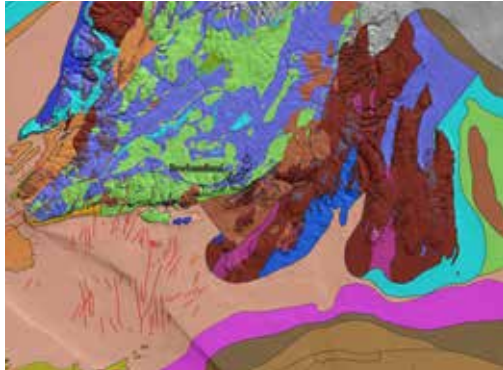


# CARIS ACADEMIC PARTNERING PROGRAM



The Teledyne CARIS Academic Program provides access to the full range of Teledyne CARIS software for educational purposes at a minimal yearly fee.

This program provides academic institutions with the latest Teledyne CARIS software used by industry, allowing students to gain valuable hands-on experience prior to entering the workplace.

Faculty can access free training, held periodically at Teledyne CARIS offices around the world, and integrate the same professionally developed course materials within their lectures and practical programs.

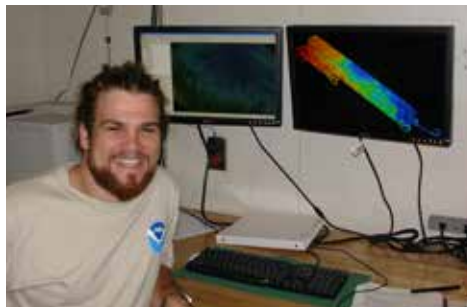
## THE PARTNERSHIP BETWEEN INDUSTRY AND ACADEMIA BEGINS

### Fostering Future Geospatial Professionals

Teledyne CARIS is proud to support the Academic Partnering Program. The program currently provides more than 75 academic institutions around the world with the geospatial software they need to run effective training programs in the areas of hydrography, marine sciences, geology, cartography and GIS.

Teledyne CARIS has benefited greatly over the years through the ideas and improvements suggested by our valued academic partners. Faculty and students are encouraged to work closely with Teledyne CARIS in an effort to push the limits of the software by suggesting new algorithms, tools and workflows.

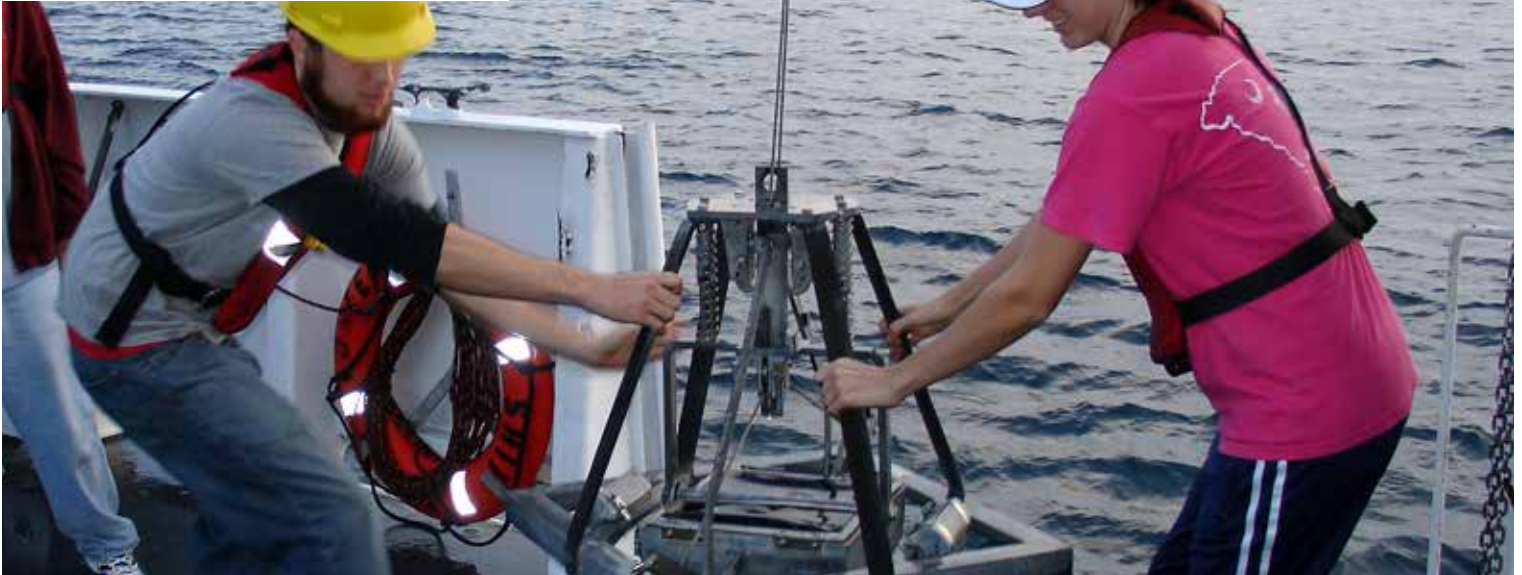
Through the Academic Partnering Program we aim to help foster the next generation of geospatial professionals. Many students from partnering institutions have gone on to pursue exciting career opportunities at Teledyne CARIS, or with one of the many organizations worldwide that utilize Teledyne CARIS software in their day-to-day work.



By partnering with Teledyne CARIS, you not only get access to the latest software and exciting opportunities for research but, most importantly, you give your students the best start for their future careers in geomatics.

*"Teledyne CARIS software packages are an integral part of the USM Hydrographic Science program because they allow students to apply the hydrographic theory they have learned in the classroom."*

*-Dr. David Dodd  
University of Southern Mississippi,  
United States*



## ACADEMIC PARTNERING PROGRAM

### Teledyne CARIS, Inc.

115 Waggoners Lane  
Fredericton NB E3B 2L4  
Canada  
Tel +1 (506) 458-8533  
Fax +1 (506) 459-3849

### Teledyne CARIS EMEA

Bremvallei 1  
5237 LV 's-Hertogenbosch  
The Netherlands  
Tel +31 (0)73 648 8888  
Fax +31 (0)73 648 8889

### Teledyne CARIS USA

415 N Alfred Street  
Alexandria VA 22314  
United States  
Tel +1 (703) 299-9712  
Fax +1 (703) 299-9715

For more information  
please contact

[caris-info@teledyne.com](mailto:caris-info@teledyne.com)

### Available Software Packages

**HIPS™ and SIPS™**: Hydrographic data processing

**Notebook**: In field feature capture  
**BASE Editor™**: DEM creation and analysis

### Engineering Analysis

**Module™**: Waterway management  
**S-57 Composer™**: Electronic chart production

**Paper Chart Composer™**: paper chart production

**LOTS™**: Boundary delineation

**Spatial Fusion™**: Web discovery

### Program Details

- Academic Program membership is renewable annually.
- The basic level of entry provides up to 5 licenses of the required Teledyne CARIS software.

- Multiple software packages can be selected for each license.
- Additional licenses can be added on request with program fees being adjusted accordingly.
- Individual student licenses for research projects or thesis work are possible.
- Training is strongly encouraged to ensure the correct use of the software. An instructor will be given a complimentary registration to attend a Teledyne CARIS training course.
- Training materials are available for instructors' utilization.
- Industry leading technical support is available through our Online Helpdesk.
- Software updates are provided within the membership period.



*Giving students the latest hands-on experience required for today's workplace.*

*"CARIS BASE Editor is exactly what I needed for compiling a regional database of multibeam data from the Southeast continental margins so that deep sea coral habitats can be identified."*

*-Kacey Johnson, student at the College of Charleston, South Carolina, United States*

For more information contact  
[caris-info@teledyne.com](mailto:caris-info@teledyne.com)